

# FULL HOUSE

A MODERN FABLE ABOUT URBAN COHABITATION

For All Ages

Coexistence

Humour



MORE THAN 80  
PERFORMANCES IN  
CATALONIA, SPAIN  
AND EUROPE



Co-funded by the  
Creative Europe Programme  
of the European Union

CO-PRODUCED BY:

dahir

theater  
land  
steier  
mark

La Strada  
graz

"Eléctrico 28 is an associate partner of in situ, the european platform for artistic creation in public space, co-funded by the creative europe programme of the european union."



DURATION: 50 min aprox.  
STAGE DIMENSION: 6 x 4 m

MASKS

LIVE MUSIC AND SOUND

NON-CONVENTIONAL  
SPACES

TARGET AUDIENCE: all ages  
GENRE: humour



WATCH TRAILER

Full House is a modern fable that by means of physical theatre, live music and sound, a lot of humour, but no words, tells the story of the neighbours Koala, Dog and Horse who live door to door. Koala is simply in love with the whole world, Dog is a loner passionate about classical music and the energy bundle, Horse, has many things cooking at the same time. The three are primarily occupied with themselves and their daily routines not realizing each other at all. So conflicts are constantly lurking around each corner. The last straw is the arrival of a total stranger, Tiger, who with his house on his back arrives to the neighbourhood with the intention to settle down. His exuberant way of being tops the others and their peculiarities by all means. His arrival in the moment when the problems of the neighbourhood are peaking out, however, does not only provoke the other animals to unite against a stranger, supporting their eagerness to fight differences but, for the first time makes them see similarities between each other, as well. When Tiger invites everyone to join him for his own welcome party, he sets a new situation in which all four of them get together and slowly begin to let go of the prejudices they have against each other, getting familiar with the sense of community.



## ALTERNATIVE OPEN SPACES

*Full House* can be installed in shared courtyards, parks, squares and pavilions, as long as they are outdoor spaces. The project was born with the idea of being installed in communities of neighbors with deep problems of coexistence, but currently we also act outside this specific context.

That's why *Full House* has so many options for locations and may or may not take into account its initial purpose.

## ALTERNATIVE SPACES OF DIFFICULT COEXISTENCE

In any case, Eléctrico 28 keeps the door open to make *Full House* in its essence: to enter neighborhood communities with complex coexistence. The show would be joined by a participatory action with the people involved. If you need a more impactful and in-depth project for your neighborhood, *Full House* "project" would be a nice alternative.







# DOG

LONELY  
GRUMPY  
GRUMBING  
MAD  
IN LOVE WITH CLASSICAL MUSIC



# KOALA

SLEEPY  
SENSIBLE  
OPTIMISTIC  
CLUMSY  
IN LOVE WITH FLOWERS



# HORSE

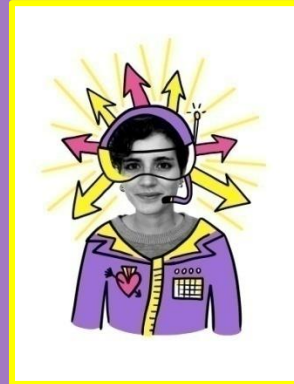
ABSENT MINDED  
LUNATIC  
SENSUAL  
LAUGHING  
CRAZY ABOUT CARROTS



# TIGER

SOCIABLE  
CURIOUS  
GENEROUS  
ADVENTUROUS  
EASILY SCARED  
PARTY LOVING

# ABOUT US



We are a collective of artists with various backgrounds, such as clown, physical theatre, dance, writing and street arts. We also individually carry the knowledge from studies of literature, linguistics, cultural studies, medicine, pedagogy and human resources on our backs.

Since the beginnings of *Espresso Encounters*, our first project together, we have especially shared the passion of thinking the public space as a stage and finding a language, dramaturgies, as well as surprises and images for and in it.

We like the idea that our projects trigger the desire to play, imagine and think because, to us, these qualities are basic human needs.

With the project *Stellar Moments of Humanity* we have performed in festivals in Cataluña, Austria, Germany, and Norway. With these two shows we have followed and fortified our artistic aim, the exploration of public space, engagement with territory and community, the role of the audience, and use of humour.

IF YOU WANT TO GET TO KNOW US IN PERSON,  
LOOK FOR US: WE WEAR ANIMAL MASKS AND ARE  
NICE PEOPLE.



# WE ALSO WORK WITH

**SIRUAN DARBANDI**

Soundtrack and live sound & voice

**RESANITA & ELÉCTRICO 28**

Customs

**RESANITA & DAGEKO.GMBH**

Scenography and atrezzo

**IVANA KOVALCIK**

Masks design and construction

**DAHIR (GEORG & DAGMAR KOTZMUTH) &  
ANA REDI-MILATOVIC**

Original Idea

**KATRINA GÜNTHER**

Web Design

**NIKOLA MILATOVIC**

Photography

**DAVID FRANCH, ANA REDI-MILATOVIC &  
RICARDO GARCIA**

Other interpreters



# DO YOU WANT TO KNOW MORE?

SEND US A  
LETTER



[WWW.ELECTRICO28.ORG](http://WWW.ELECTRICO28.ORG)

MANAGEMENT: ANA SALA – IKEBANAH AAE  
TELF: +34 619 95 17 91  
ANASALA@IKEBANAH.ES

ELECTRICO 28 COORDINATION: JUDIT MARTÍNEZ  
TELF: +34 677 89 43 79  
OFFICE@ELECTRICO28.ORG